



MONTHLY MEMBERSHIP PROGRESS REPORT

District 202 F

Results as of: 11/30/2017

GMT: CLIFFORD HEYWOOD

LOCATION NEW ZEALAND

GMT CA

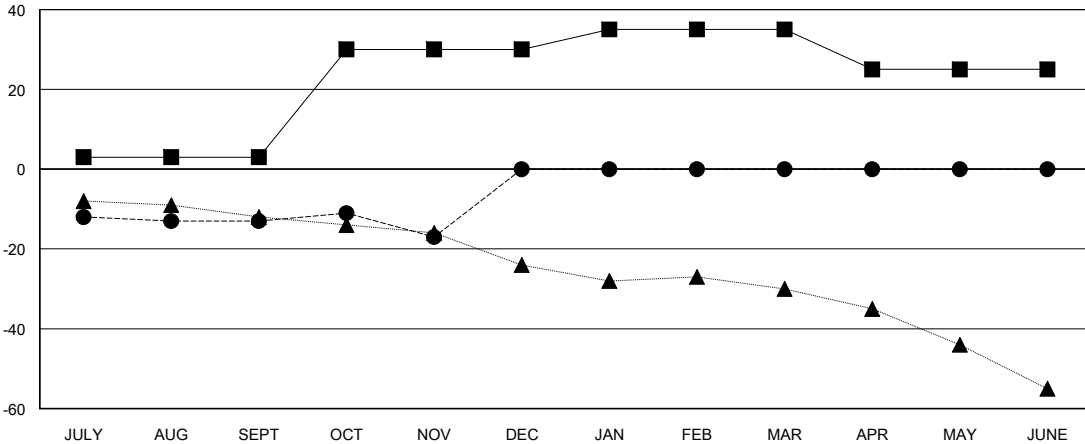
Clubs			
RESULTS FOR 2017-2018			
QUARTER	NEW CLUB GOAL	NEW CLUBS	DROPPED CLUBS
JULY/AUG/SEPT	0	0	0
OCT/NOV/DEC	1	0	0
JAN/FEB/MAR	0	0	0
APR/MAY/JUNE	0	0	0

Members			
RESULTS FOR 2017-2018			
QUARTER	MEMBER GROWTH NET GOAL	MEMBER GROWTH ACTUAL	DROPPED MEMBERS ACTUAL (including transfers)
JULY/AUG/SEPT	3	27	34
OCT/NOV/DEC	27	22	21
JAN/FEB/MAR	5	0	0
APR/MAY/JUNE	-10	0	0

GOALS AND ACTUAL NEW CLUBS CUMULATIVE



GOALS AND ACTUAL MEMBERS CUMULATIVE



DROPPED CLUBS: 0

22 CLUBS OF 48 ADDED 1 OR MORE NEW MEMBERS

GENDER DISTRIBUTION	
MALE	920 (65.53%)
FEMALE	484 (34.47%)
Women Percentage Fiscal Year Goal: 38%	

DROPPED MEMBERS	
DECEASED	6
CLUB CANCELLED	0
OTHER	49
TOTAL	55

[CLICK HERE FOR CUMULATIVE MEMBERSHIP DATA](#)

TOTAL FAMILY UNIT MEMBERS	59
FAMILY MEMBERS PAYING HALF DUES	30